

Venue Hire

Affordable venue hire at Manchester Craft and Design Centre

Our beautiful Victorian building was a former fish market and has retained some of its original features. It's a great location for wedding receptions, late-night events, gigs and performances.

We are open to the public Monday – Saturday from 10am – 5.30pm and on the 2nd Sunday of the month from 11am – 5pm. You are able to hire the building outside of those hours. T&Cs will apply.



Specifications

Historic architecture, light-filled space and located in the heart of the Northern Quarter. Our venue is atmospheric and full of character.

- Approximately 32 sqm ground floor space (additional space can be included).
- The ground floor is fully wheelchair accessible.
- Accessible toilet on the ground floor
- Free Wifi
- CCTV

Capacity

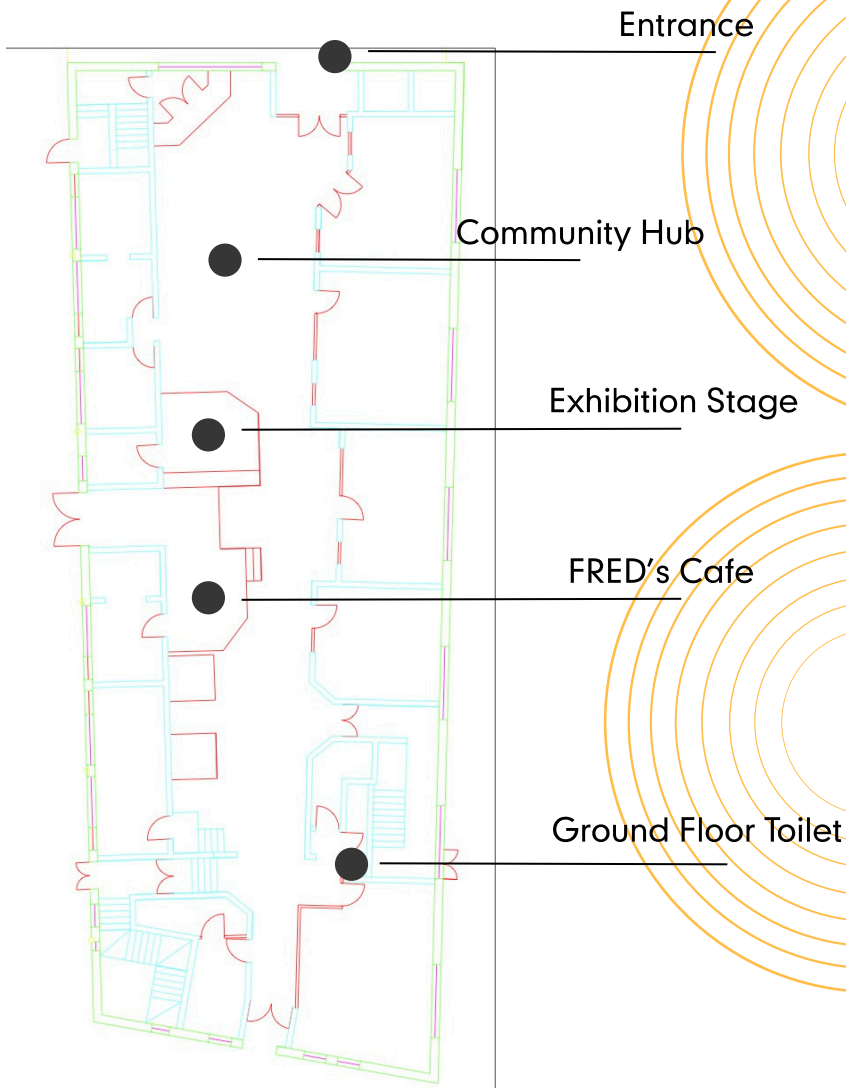
Festivals & evening events - 200

Performances - 80

Wedding receptions - 80



Floor Plan



Equipment

4 folding tables 1830 x 760mm

2 folding tables 1220 x 600mm

6 Black tablecloths

20 folding chairs

4 Bench tables

4 Benches

AV equipment (1x microphone. 2x speakers & 1x deck).



Charges

Monday - Saturday

Evening hire (6pm -11pm) £1500 - 5/hours

Sunday

Full Day (12pm - 11pm) £2000 - 11/hours

Alternative hours are available upon request.

Food & Drink

Fred's is now open on the ground floor of the Centre - an English-style café with a northern accent and appetite.

Expect simple, seasonal, locally sourced things turned into lunch things, snack things, baked things, sweet things, comfort things, and some surprisingly chef-y things. Plus, all the cups, mugs, pints, and bottles of things you'd expect from a café that isn't mucking about.

Menus change daily, but you'll always find something worth eating. Breakfast snacks and coffee from 10am, with lunch from 12pm, Tuesday to Saturday.

Check out the [menu](#) on our website or follow [@freds_mcr](#) for the latest.



Catering Options

Lunch Offer

Coffee & Cake - £5 pp

Coffee, Sandwich & Cake - £12 pp

Receptions

1x drink per person - £5 pp

1x drink & 3x canapes - £12 pp

Buffets

Maximum 85 people - £30 pp

Hiring of cafe seating area

£250 per day

To discuss collaborations, please reach out to
FRED's Cafe directly.

*pp - Per person



FAQs

Where can I park?

There is a loading bay on Oak Street, but vehicles must then be moved to an appropriate car park or on-street pay and display.

Church Street NCP car park is one minute away at the end of Oak Street and there are two disabled bays on Oak Street.

Do you offer discount rates for charities?

Yes, we do. Please email exhibitions@craftanddesign.com for more information.



What time can I arrive to set up?

All bookings include a 30-minute set-up and pack-down time. You can arrive at 5.30pm and leave at 11pm. Just let us know if you require additional time when booking, and we can factor this into your hire.

Is the venue accessible?

Both the entrances to our building and Space 2 are step-free. We have a disabled toilet on the ground floor. Unfortunately, our two-story Victorian building is currently without a lift so if you would like to arrange a staff member to come down and assist you with anything, please call the office on 0161 832 4274.



Contact Us

If you would like more information or would like to book, please email contactus@craftanddesign.com or call the office on 0161 832 4274

www.craftanddesign.com

Manchester Craft & Design Centre
17 Oak Street, Northern Quarter,
Manchester, M4 5JD

@manchestercraft

When hiring the centre for an event, you are directly supporting a registered charity! Income from venue hires helps us to continue our mission in developing talent and making craft accessible to all.



We are a registered charity
(charity number 1173366)



Supported using public funding by
**ARTS COUNCIL
ENGLAND**



**MANCHESTER
CITY COUNCIL**